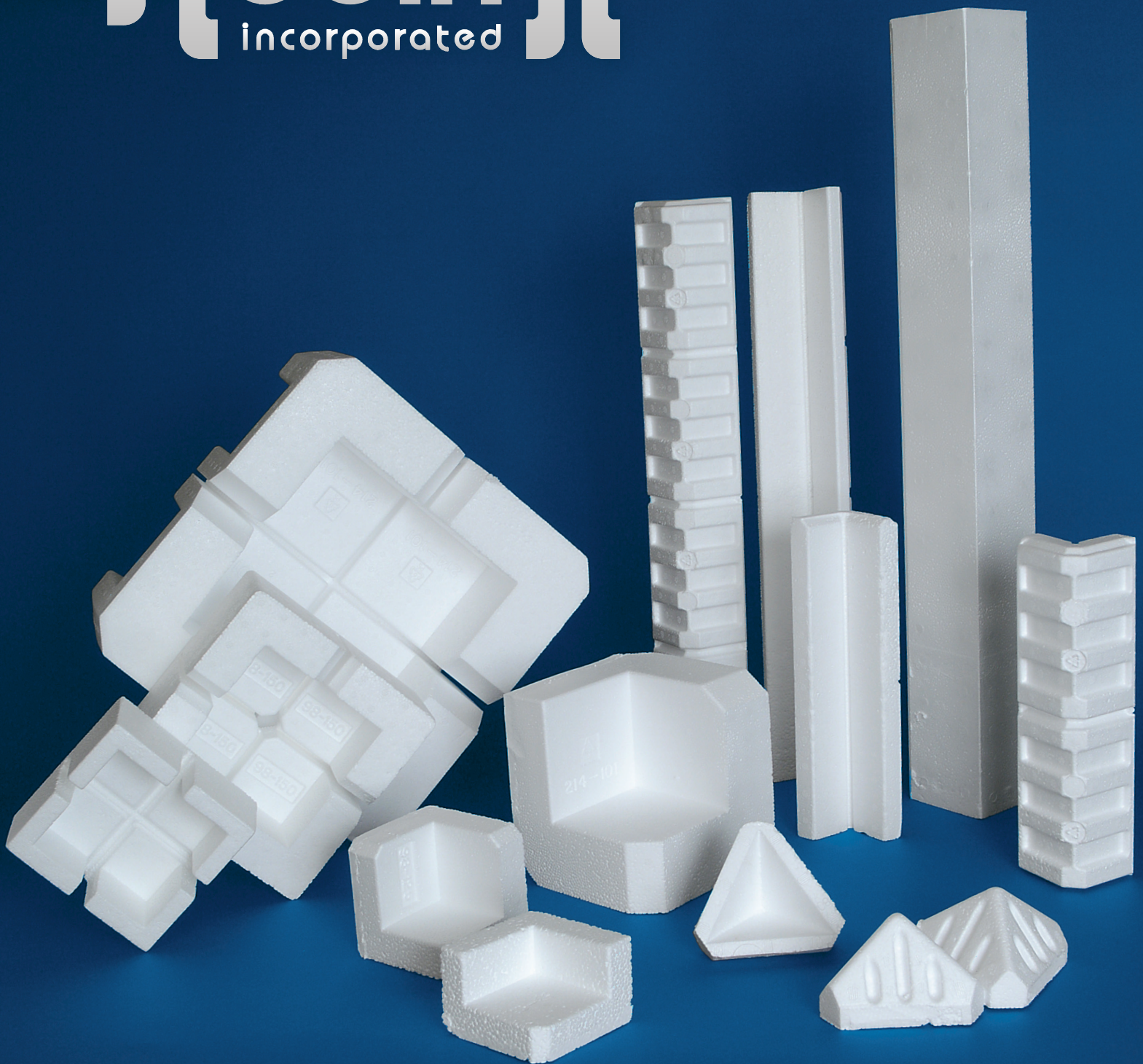




## Corner Blocks



Expanded Polystyrene Custom Molder & Fabricator



# Square Corners

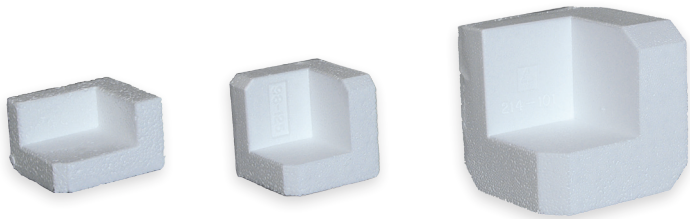
Typical foam density 1.25 pcf density.

Affordable corners are molded together in clusters of four break-away corners for easy count and handling. Corners range from 2" x 2" x 2" with 5/8" wall to 4" x 4" x 4" with 1-1/2" wall.

Outside Dimension	Inside Dimension	Foam Wall Thickness	Corners Per Case (UPSable)	Our Reference Code Number
2" x 2" x 2"	1.375" x 1.375" x 1.375"	5/8" (.625)	640	88-01
4" x 4" x 4"	3.25" x 3.25" x 3.25"	3/4" (.75)	252	89-01/3
4" x 4" x 4"	3" x 3" x 3"	1"	252	89-01/3
4" x 4" x 4" *	2.75" x 2.75" x 2.75"	1.25"	252	98-125
4" x 4" x 4"	2.5" x 2.5" x 2.5"	1.5"	252	98-150
4" x 4" x 2.5" * **	3" x 3" x 1.5"	1"	396	98-01

Corners are packaged in oversized "UPS"able cartons. Contact our office for special requests such as variation in density specific to your application.

\* These corners are available in expanded Polyethylene  
\*\* This corner is available in tough ARCEL™ material for those special applications.

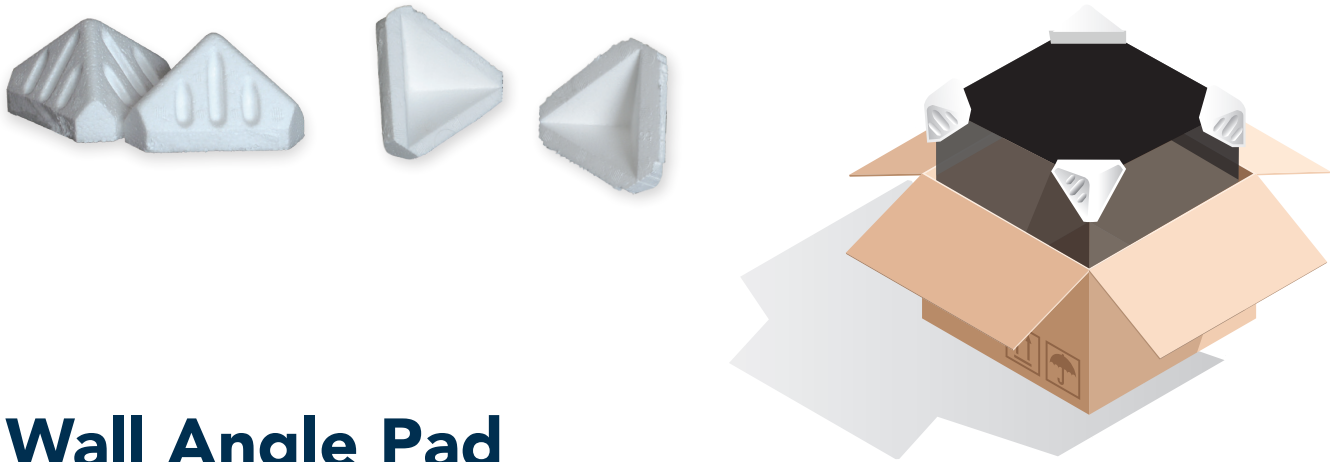


# Tri-Corners

Tri-Corners are pyramidal in design.

They have 4 sq. inches of bearing area per side with "air cushion" coring on the exterior surface. Tri-Corners are molded in sheets of 80 "break-away" corners.

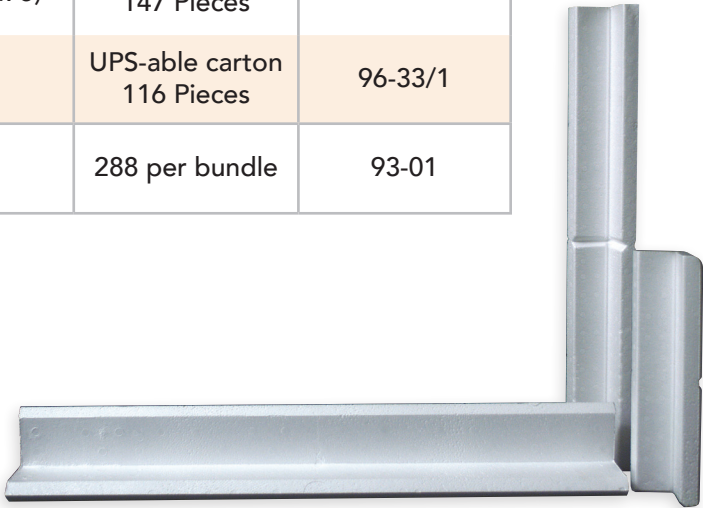
Radial Dimension	Inside Edge	Wall Thickness	Packaging	Our Reference Code Number
3.75" x 3.75" x 3.75"	2-7/8" (2.875)	3/4" (.75)	Carton: 200 Corners	85-01 Carton
			Bulk: 2,400 Corners	85-01 Bundle

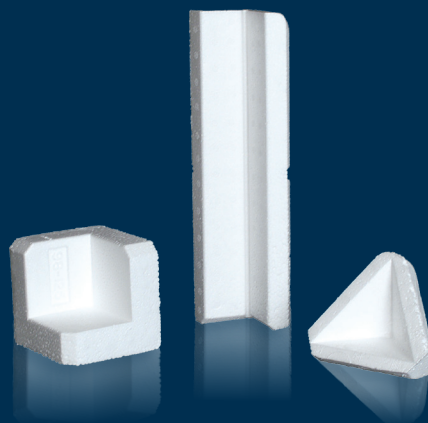


# Wall Angle Pad

Foam density 1.25 pcf density EPS.

Description	Dimensions	Wall Thickness	Packaging	Our Reference Code Number
Wall, Angle Pad	24" x 3" x 3" overall 2.25" inside leg width	3/4" (.75)	UPS-able carton 147 Pieces	96-33/3
Wall, Angle Pad	24" x 3" x 3" overall 2" inside leg width	1"	UPS-able carton 116 Pieces	96-33/1
Molded Angle Pad	30" long 3" inside leg	1"	288 per bundle	93-01





**Robin**  
Incorporated

251 E. John St.  
Markesan, WI 53946  
920-398-2303  
[www.robin2.com](http://www.robin2.com)

**Expanded Polystyrene Custom Molder & Fabricator**